

Monthly Forecast Summary

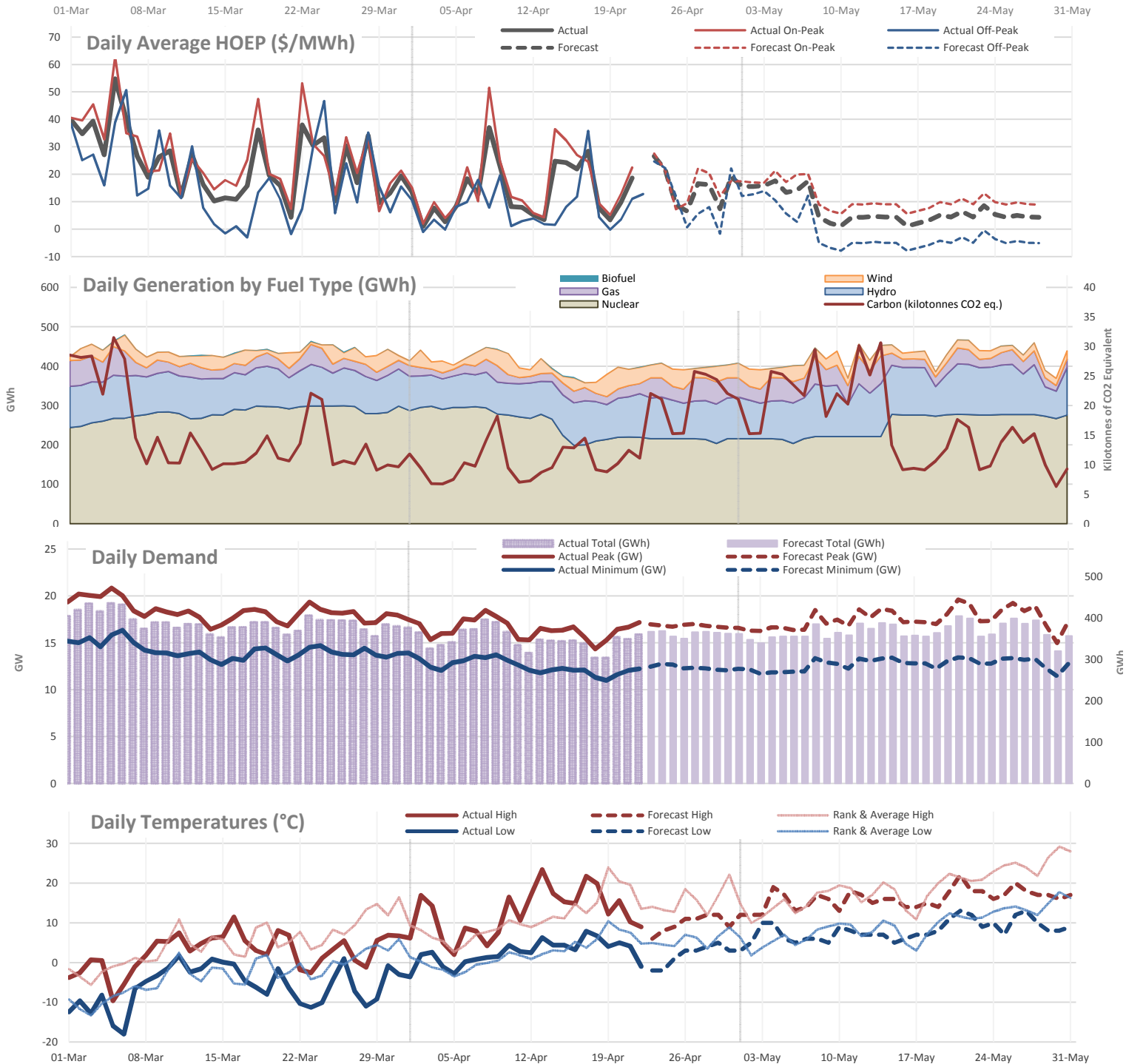
May	Temp. Basis of HOEP Forecast	Average HOEP (\$/MWh)			Temperature (°C)	
	Forecast	Forecast	Min. Forecast	Max. Forecast	Ave. High	Ave. Low
	Rank & Average	6-8	2.49	13.35	16.1	8.0
	Rank & Average	8-9	3.89	15.76	18.9	9.4

GA Class B Rate for: April \$/MWh 90.59

GA 1st Estimate for: May \$/MWh

Model 1: 92.86

Model 2: 93.36



NOTES FOR CHARTS

All charts show daily data for three months, actual data for the past and current month up to (but not including) the current day and predicted values going out to the end of the next month.

1. Price

The chart shows daily average "hourly Ontario energy price" (HOEP). The arithmetic average of all hours in each day is shown along with the on- and off-peak averages where on-peak is from 7AM to 7PM.

2. Generation

The chart shows the total daily output from Ontario generating facilities with at least 20 MW capacity according to fuel type. Estimated carbon emissions from gas-fuelled generators are also shown in thousands of tonnes of carbon dioxide equivalents (CO₂ eq).

3. Demand

The charts shows Ontario Demand as defined by the IESO. Daily energy totals as well as daily peak and minimum demand levels are shown.

4. Temperature

The charts shows actual and forecast daily high and low temperatures as well as the historical "Rank & Average" highs and lows. Rank & Average is an alternative to multi-year weather averages, which reduce a normally wide range of values to a single average with little day-to-day variation. Instead of just averaging the temperatures by calendar day (January 1, 2, etc.), temperatures are averaged by their rank within the month - the highest temperature from each January over the past ten years are averaged together, then the second highest and so on. These averages are then assigned to each day based on the calendar day averages. This provides a better representation of the full range of temperatures that would normally be seen in each month.